

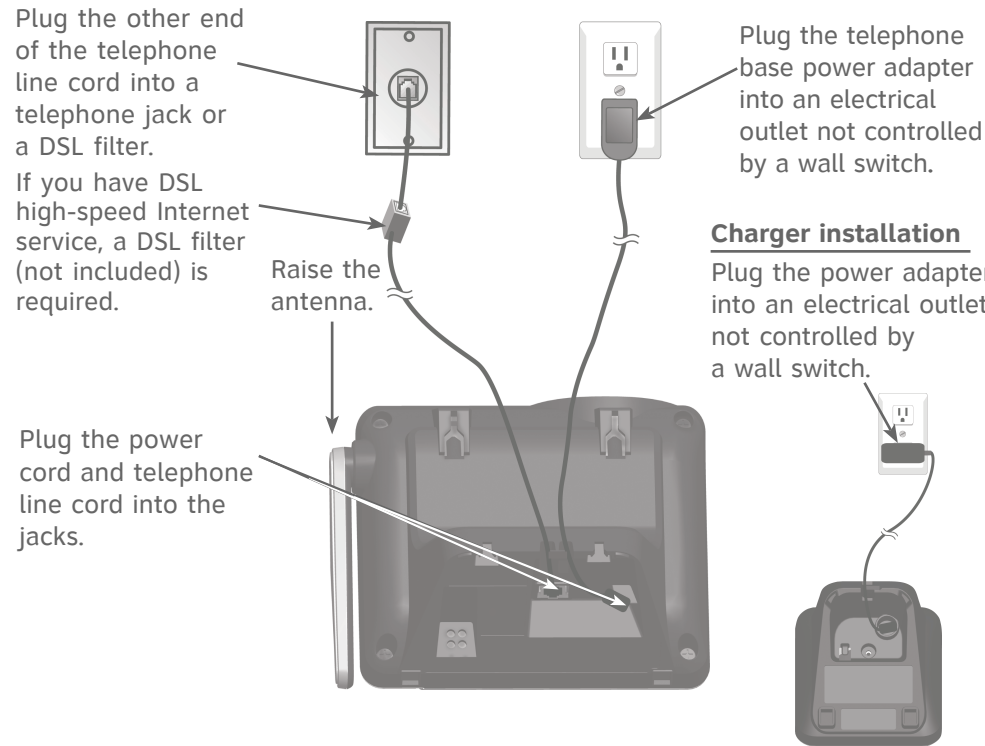


## Quick start guide

CL81114/CL81214

This quick start guide provides you with basic instructions only. For more complete instructions, refer to your Abridged user's manual provided in the package, or see the online Complete user's manual at [www.telephones.att.com/manuals](http://www.telephones.att.com/manuals).

### Telephone base installation



**Caution:** Use only the power adapter provided with this product. To obtain a replacement, visit our website at [www.telephones.att.com](http://www.telephones.att.com) or call **1 (800) 222-3111**. In Canada, dial **1 (866) 288-4268**.

### Battery installation

Install the battery, as shown below. Charge your handset(s) before initial use. The battery is fully charged after 10 hours of continuous charging.

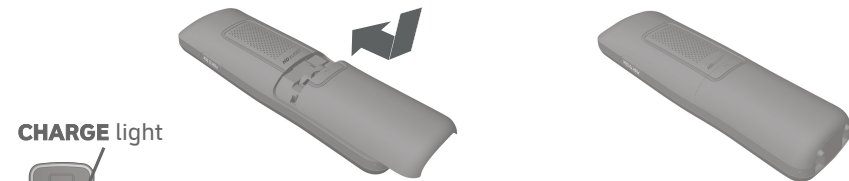
#### Step 1

Plug the battery connector securely into the socket inside the handset battery compartment. Insert the supplied battery with the label **THIS SIDE UP** facing up, as indicated.



#### Step 2

Align the cover flat against the battery compartment, then slide it upwards until it clicks into place.



#### CHARGE light



#### Step 3

Charge the handset by placing it face forward in the telephone base or charger. The **CHARGE** light on the handset is on during charging.

**Caution:** Use only the supplied rechargeable battery or replacement battery (model BT183342/BT283342).

## Quick reference guide

### CHARGE light

On when the handset is charging in the telephone base or charger.

### ▼CID/VOLUME

- Press ▼CID to show caller ID log when the handset is not in use.
- Press to scroll down while in menus.
- Press to decrease the listening volume when on a call.

### PAUSE/REDIAL

- Press repeatedly to view the last ten numbers dialed.
- While entering numbers, press and hold to insert a dialing pause.

### (PHONE/FLASH

Press to make or answer a call.



Press and hold to set or dial your voicemail number.

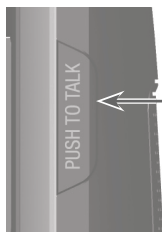
### TONE X/a>A

- Press to switch to tone dialing temporarily during a call if you have pulse service.
- While entering names, press to change the next letter to upper or lower case.

### /SPEAKER

Press to make or answer a call using the speakerphone.

### Handset side view



### PUSH TO TALK

- Press to initiate a one-to-one or one-to-group broadcast.
- Press and hold to broadcast to a group of system handsets.

### Telephone base



### /HANDSET LOCATOR

- While the telephone is idle, press to page all handsets.
- Press and hold to begin handset deregistration.

### IN USE indicator

- On when the handset is in use.
- On when a handset is being registered.
- Flashes when there is an incoming call or when handsets are being deregistered.
- Flashes when another telephone is in use on the same line.

### ▲DIR/VOLUME

- Press ▲DIR to show directory entries when the handset is not in use.
- Press to scroll up while in menus.
- Press to increase the listening volume when on a call.

### MENU/SELECT

- When the handset is not in use, press to show the menu.
- While in the menu, press to select an item or save an entry or setting.

### OFF/CANCEL

- During a call, press to hang up.
- While in a menu, press to cancel an operation, back up to the previous menu, or exit the menu display; or press and hold this button to exit to idle mode.

### QUIET # (pound key)

Press and hold to enter the QUIET mode setting screen, or to deactivate QUIET mode.

### EQ

During an outside call or intercom call, press to change the audio quality to best suit your hearing.

### MUTE/DELETE

- During a call, press to mute the microphone.
- Press to delete digit or character.

## Initial settings

We recommend you program your telephone system before use.

The following are a few examples of common features to set before using the telephone. Refer to the **Handset settings** in the Abridged user's manual or the online Complete user's manual for detailed instructions on setting all telephone features.

### Set date/time

Set the date/time before using the telephone.

- MENU** -> ▼CID or ▲DIR -> **Set date/time** -> **SELECT**.
- Enter the month, day and year using the dialing keys -> **SELECT**.
- Enter the hour and minute using the dialing keys.
- ▼CID or ▲DIR to choose **AM** or **PM** -> **SELECT**.

### Handset ringer volume

You can set the ringer volume level to one of the six levels or turn the ringer off.

- MENU** -> ▼CID or ▲DIR -> **Ringers** -> **SELECT**.
- SELECT** to select **Ringer volume**.
- ▼CID or ▲DIR to choose the desired level -> **SELECT**.

### Reset language to English

If you want to change the display language, or you have accidentally changed the language and want to switch it back to English, follow the steps mentioned below.

- MENU** -> On the handset, enter **364#** using the dialing keys.

## Telephone operation

Operation	Steps
Making a call	Press <b>(PHONE</b> or <b>/SPEAKER</b> -> Enter the telephone number.
On-hook dialing (predialing)	Enter the telephone number -> Press <b>(PHONE</b> or <b>/SPEAKER</b> to call.
Answering a call	Press <b>(PHONE</b> or <b>/SPEAKER</b> , or press any dialing key ( <b>0-9</b> , <b>TONE X</b> or <b>#</b> ).
Ending a call	Press <b>OFF</b> or return the handset to the telephone base or charger.
Speakerphone	During a call, press <b>/SPEAKER</b> to switch between handsfree speakerphone and normal handset use.
Redial	Press <b>REDIAL</b> repeatedly to select the desired entry -> <b>(PHONE</b> or <b>/SPEAKER</b> to call.
Volume control	Press <b>VOLUME▼</b> to decrease or press <b>VOLUME▲</b> to increase the listening volume during a call.
Call waiting (Requires subscription from telephone service provider)	Press <b>(FLASH</b> to put current call on hold and to take the new call; press again to switch back and forth between calls.

Caller ID

This product supports caller ID services offered by most telephone service providers. The telephone stores caller ID information for the last 50 incoming calls. This information is common to all handsets.

Missed call indicator
When a handset is in idle mode and has new or missed calls, its screen shows <b>XX Missed calls</b> . You can erase the missed call indicator either by reviewing the call log one by one, or by <u>pressing and holding</u> <b>⏏CANCEL</b> on the handset in idle mode.
Review and dial a number in the call log
1. <b>CID</b> in idle mode -> <b>▼CID</b> or <b>▲DIR</b> to scroll through the list. 2. <b>(PHONE</b> or <b>⏏/SPEAKER</b> to call when the desired entry is displayed.

Call block

If you have subscribed to caller ID service, you can use the call block feature to reject certain calls automatically. The call block list can store up to 20 entries. This feature is only available on the cordless handset.

Operation	Steps
Adding a call block entry	1. <b>MENU</b> -> <b>▼CID</b> or <b>▲DIR</b> -> <b>Call block</b> -> <b>SELECT</b> . 2. <b>SELECT</b> to select <b>Block list</b> . 3. <b>▼CID</b> or <b>▲DIR</b> -> <b>Add new entry</b> -> <b>SELECT</b> . 4. Enter a telephone number up to 30 digits -> <b>SELECT</b> . 5. Enter a name up to 15 characters -> <b>SELECT</b> .
Blocking calls without number	1. <b>MENU</b> -> <b>▼CID</b> or <b>▲DIR</b> -> <b>Call block</b> -> <b>SELECT</b> . 2. <b>▼CID</b> or <b>▲DIR</b> -> <b>Calls w/o num</b> -> <b>SELECT</b> . 3. <b>▼CID</b> or <b>▲DIR</b> to choose <b>Not block</b> or <b>Block</b> -> <b>SELECT</b> .

Directory

The directory can store up to 50 entries, which are shared by all system handsets.

Operation	Steps
Adding an entry	1. <b>MENU</b> . 2. <b>▼CID</b> or <b>▲DIR</b> -> <b>Directory</b> -> <b>SELECT</b> . 3. <b>▼CID</b> or <b>▲DIR</b> -> <b>Add contact</b> -> <b>SELECT</b> . 4. Enter a telephone number up to 30 digits -> <b>SELECT</b> . 5. Enter a name up to 15 characters -> <b>SELECT</b> .
Searching/dialing an entry	1. <b>DIR</b> in idle mode. 2. Press <b>▼CID</b> or <b>▲DIR</b> to browse through the directory, or press the dialing keys <b>(0-9)</b> to start a name search. 3. Press <b>(PHONE</b> or <b>⏏/SPEAKER</b> to call.

For more detailed instructions, please refer to the Abridged user’s manual provided in your package, or for a full set of installation and operation instructions, refer to the online **CL81114/CL81214 DECT 6.0 cordless telephone with caller ID/call waiting** Complete user’s manual at **www.telephones.att.com/manuals**.

For customer service or product information, visit our website at **www.telephones.att.com** or call **1 (800) 222-3111**. In Canada, dial **1 (866) 288-4268**.